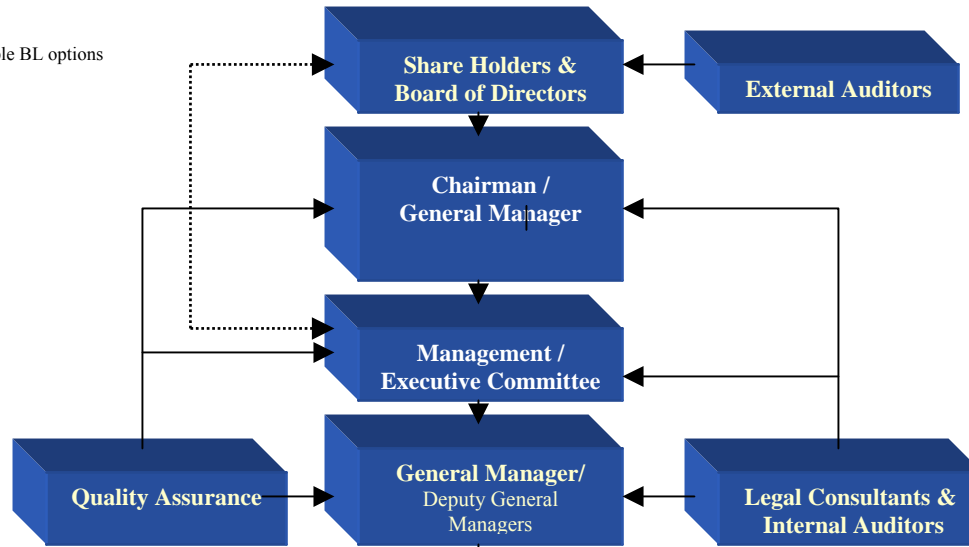
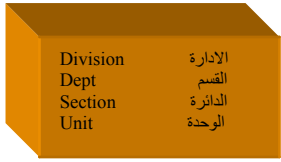


General Organigram as usually presented for Multiple BL options (ORG 1) - V.Jan 15-2004



Note:  
CCH can (and will start) as one Business line ( coffee ) AND as one Sector ( Light / No Kitchen operation).

Over time, each SECTOR must have its own Servicing Management Division to handle the various Business Lines related to the SECTOR as well as the various POS within each of the Business Lines .

The head of each Business Line ( Typically a BL manager) reports today directly to the SECTOR Manager ( Same person for CCH only operation)

The head of each SECTOR (Typically a Sector Manager) reports today directly to Chairman / GM. ( Same person for CCH only operation)

Eventually, he-she should report to a new eventual position entitled: Servicing Division General Manager.

